



Kirby Morgan Dive Systems, Inc.®

1430 Jason Way, Santa Maria, California 93455

Phone: 805/928-7772 Fax: 805/928-0342

www.kirbymorgan.com e-mail: kmgsi@kirbymorgan.com

Bulletin #5 of 2015. April 27, 2015

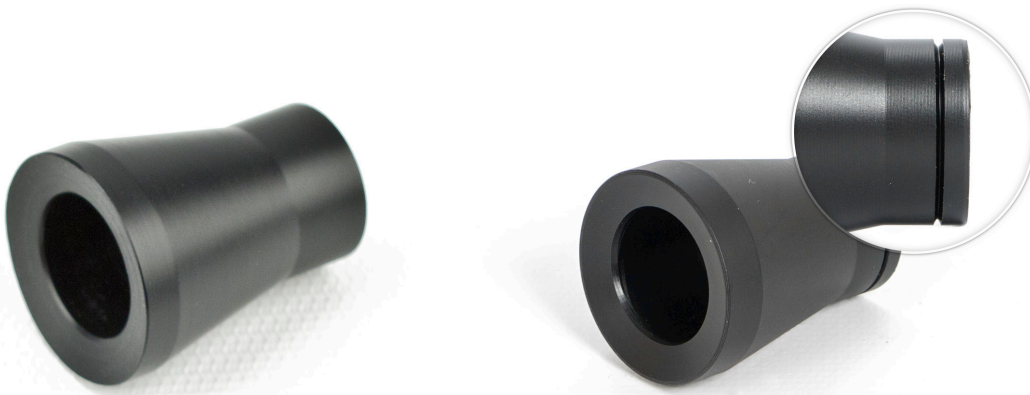
Change to Product Bulletin 550-232 Sleeves for the sealed pull pins now marked with groove, effective immediately

Products Affected:

550-232 Pull Pin Sleeve (sold in the 525-112 Sleeve Kits only. Two per kit).

525-112 Pull Pin Sleeve Kit

When used with the stainless steel helmets, Kirby Morgan® recommends shortening the sleeves (550-232) a small amount, for improved fit and function. A groove marking the best area to trim the sleeve is now machined into the material around the small end of the sleeve, as shown below.



Original 550-232, left and current grooved 550-232, right.

Again, the 550-232 Sleeves are sold only in kits of two, 525-112. The kit contains instructions on trimming when used with the Kirby Morgan® stainless steel helmets.

TRIMMING IS NOT NECESSARY WHEN USED WITH FIBERGLASS HELMETS.

Kirby Morgan® does not recommend trimming earlier sleeves that do not have the machined groove.

Sleeves with grooves are shipping now. Order 525-112 Pull Pin Sleeve Kit.

There is no change to price or part number at this time.

Please contact your local KMDSI dealer or e-mail KMDSI at sales@kirbymorgan.com for more information.